

2008

Standard Installation Instructions for Projection Screens



Kyle Mills

Kutztown University

10/17/2008

Standard Installation Instructions for Projection Screens

Recommended Bracket Type

White support brackets supplied by Da-Lite comes in various sizes (photos 1, 2 & 3).



Photo 1

Photo

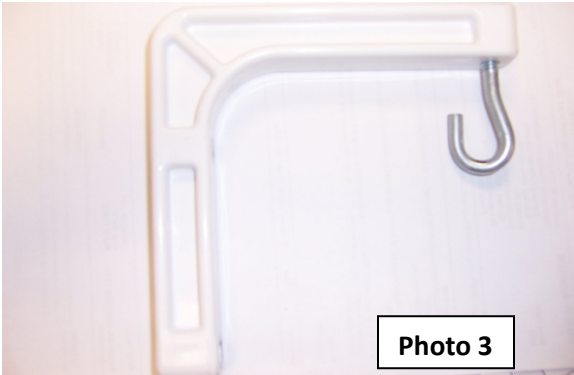


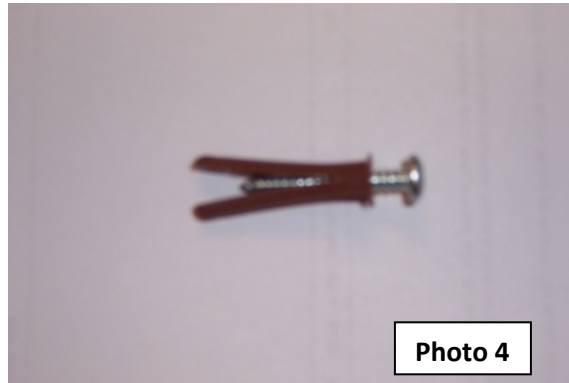
Photo 3

Fastener Standard

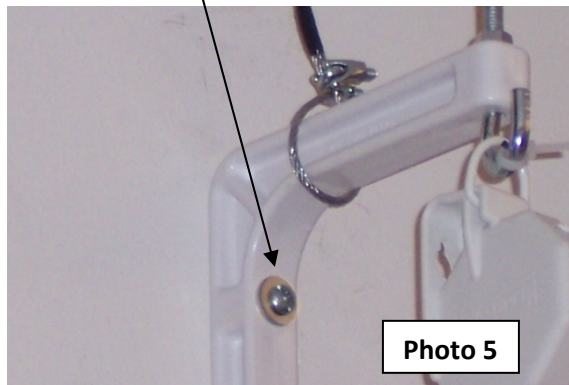
- Fasteners are required to meet minimum rating of 75 lbs.

Various Installation Methods

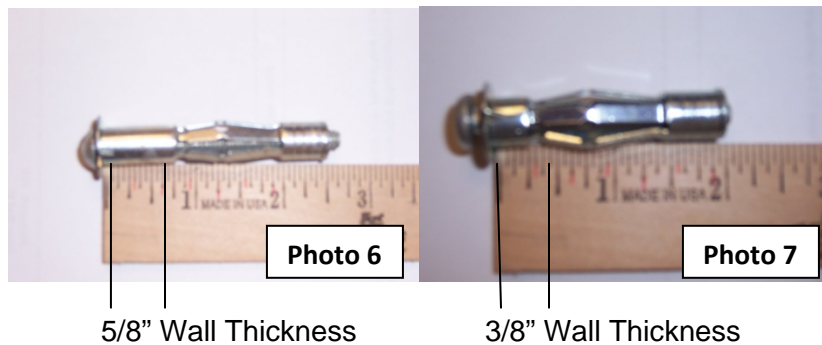
- **Masonry Installations** - use a minimum of 5/16 plastic wall anchor that expands in multiple directions (photo 4).



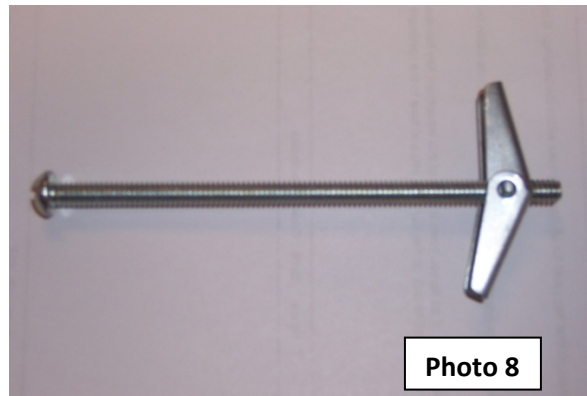
Use #12 or #14 Philips Pan Head (min. 3" long) with steel washers on both sides of bracket (photo 5).



- **Hollow Wall Installations**– For Drywall installations use Molly bolts minimum 1/4" and correctly sized for wall thickness (photo 6 & 7)



Option #2 - 1/4" spring toggle bolts using correct size based on wall thickness (photo 8).



Old Main Installation Instructions

- Installation of screens at Old Main should consist of mounting a 5/4 board (Thickness) minimum and 2' longer then screen length (foot past each end) and painted to match wall color. Fasten board into wall studs if possible (photo 9). If wall is constructed of brick with plaster finish use a minimum of 5/16 plastic wall anchor that expands in multiple directions as shown in (photo 4). Use #12 or #14 Philips Pan Head (min. 3" long) with steel washers on both sides of bracket (photo 5). Option #2 would be the use of Molly bolts minimum 1/4" and correct size for wall thickness (photo 5) or 1/4" spring toggle bolts using correct size based on wall thickness to fasten board to wall.



Additional Safety Measures

- For Hollow wall installations in areas with drop ceilings as an additional safety feature it is recommended that 1/8" uncoated steel cable using cable clamps be secured to the screen support bracket and securely fastened above drop ceiling (photo 10).



- Installation of Screens with "S" hooks should be pinched closed (if possible) and secured with tie wraps (photo 11 & 12).



- ***Any questions, please contact the Facilities Structural Shop for clarification.***

Improper Way of Installation

- **DO NOT** install screens using the “T” bars of drop ceilings (photo 13)

